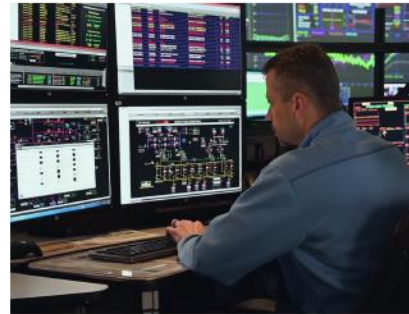


Welcome to Pacific Power's Wildfire Customer Forum

Coos Bay, Oregon



May 8, 2024

Agenda

- Situational Awareness
- Reducing Wildfire Risk
- Protective Operational Practices
- What You Can Do
- Q&A



Simon Gutierrez



Chester Lampkin

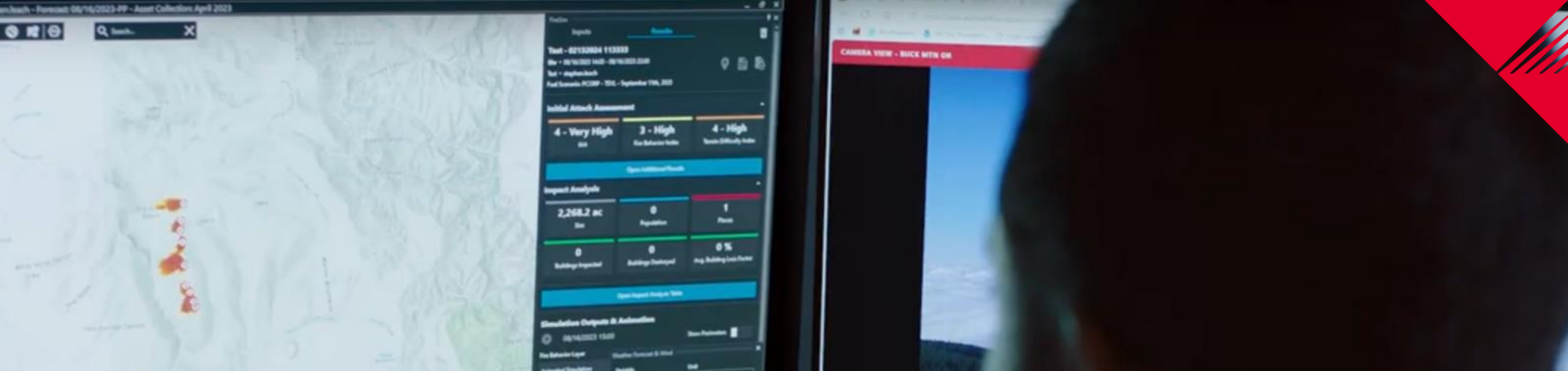


Megan Buckner



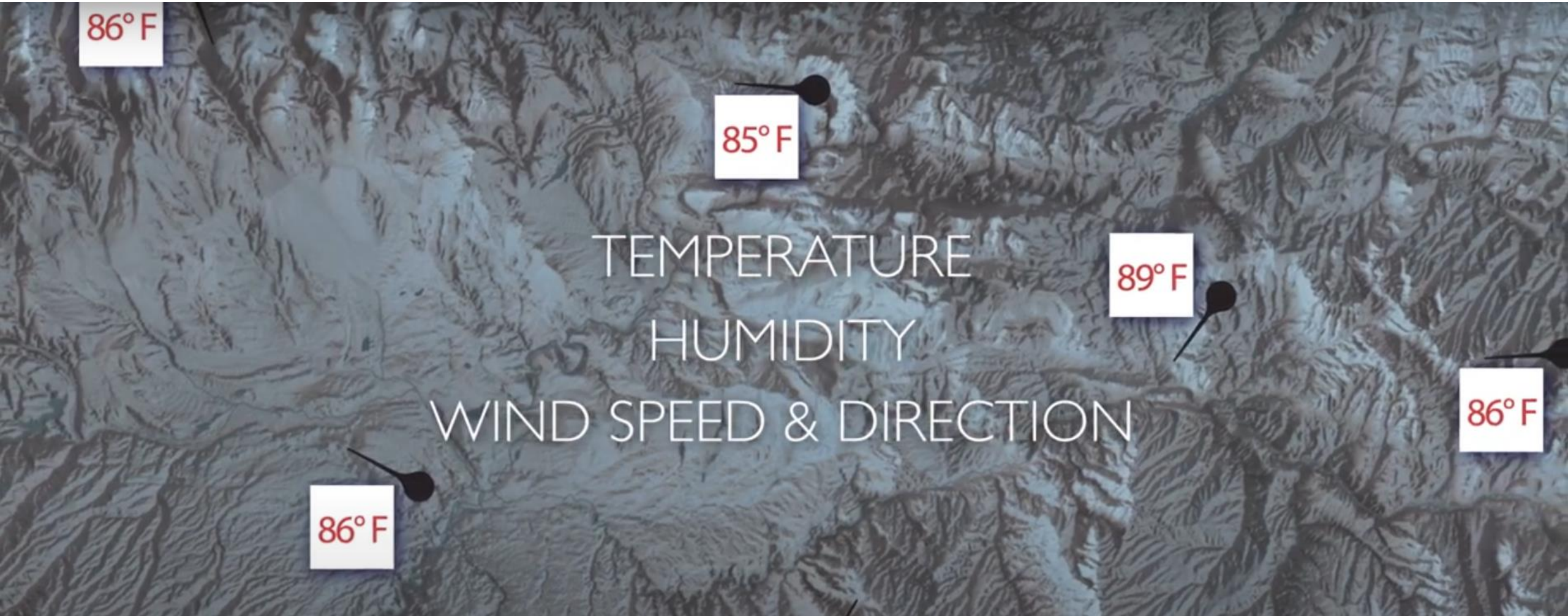
Nora Yotsov



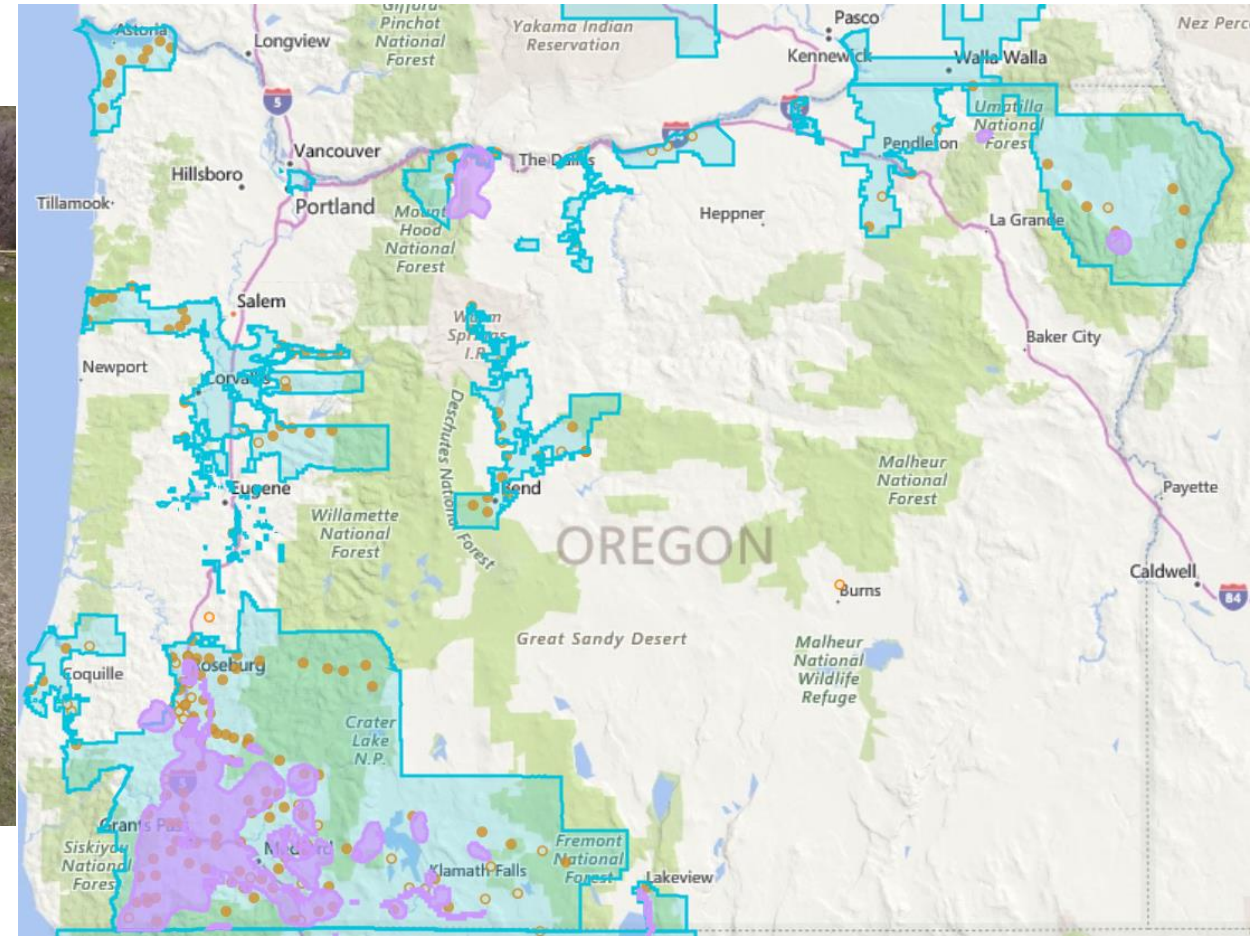
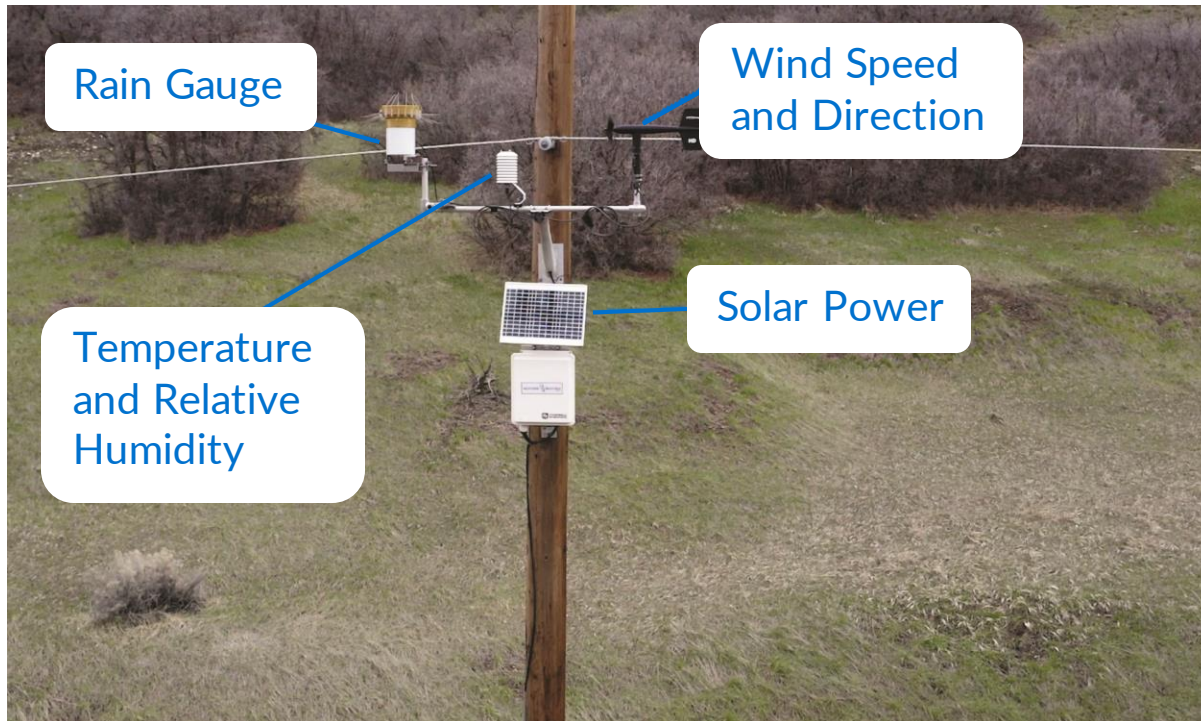


Situational Awareness

Daily Risk Forecasting



454 Weather Stations, 24/7 Monitoring



PacificPowerWeather.com

PACIFIC POWER StormGeo WEATHER AWARENESS SYSTEM All Stations Map

Filter by State: OR Region: OR - Coastal South Company: Pacific Power Service Area: All Station Type: All

Station	Region	Wind	Gust ▲	Direction	Temp	Humidity
Long Prairie	OR - Coastal South	10 mph	20 mph	WNW	56°F	54%
Quail Prairie Lookout	OR - Coastal South	10 mph	20 mph	SW	56°F	54%
Red Mound	OR - Coastal South	8 mph	16 mph	NW	55°F	62%
Powers	OR - Coastal South	6 mph	15 mph	NW	60°F	50%
US101 SB at Bullards Bridge	OR - Coastal South	6 mph	15 mph	NW	56°F	73%
Seven Mile Creek	OR - Coastal South	7 mph	14 mph	W	54°F	57%
OR42 at OR542 MP23.5 (Powers Jct)	OR - Coastal South	6 mph	14 mph	WNW	59°F	50%
US101 at E Beaver Ln. MP253 (Beaver Hill)	OR - Coastal South	8 mph	14 mph	WNW	52°F	69%
Eastside	OR - Coastal South	8 mph	13 mph	NNW	55°F	56%
US101 SB at McCullough Bridge MP 233.5	OR - Coastal South	8 mph	11 mph	NW	55°F	62%

CURRENT CONDITIONS

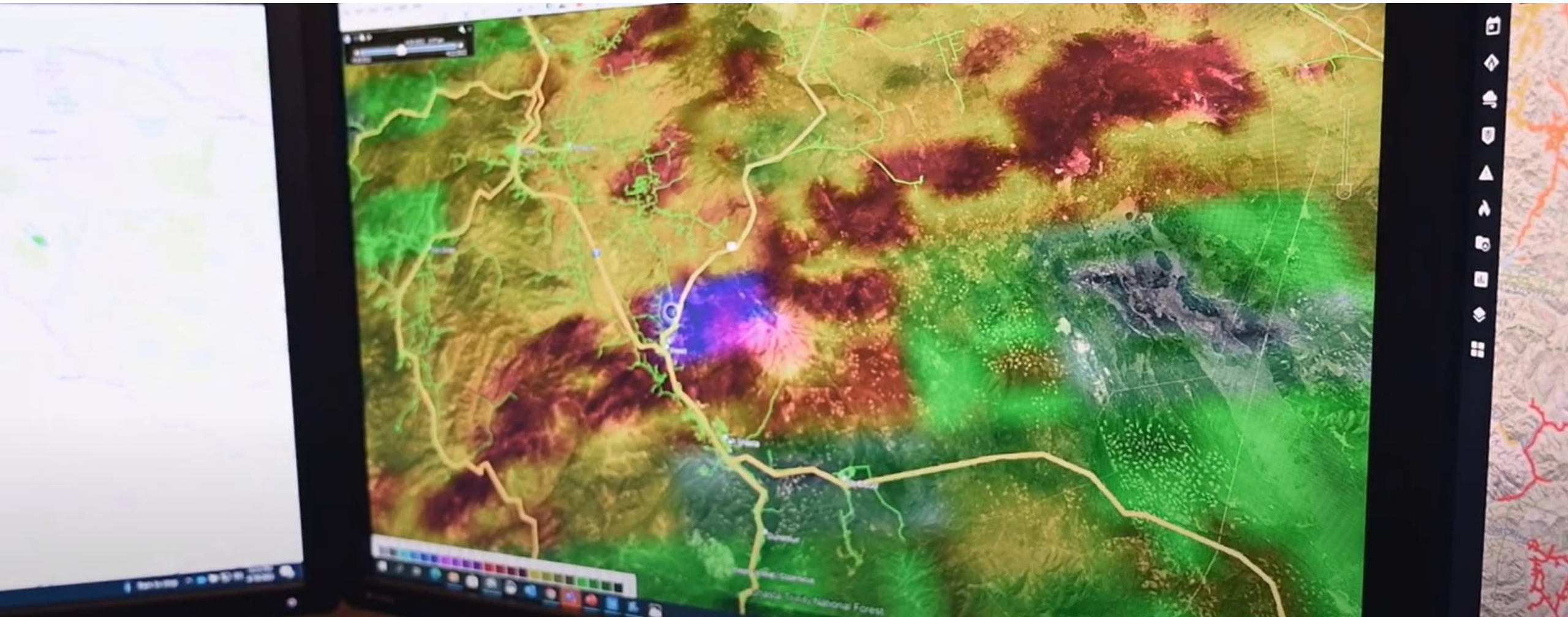
TOP GUSTS

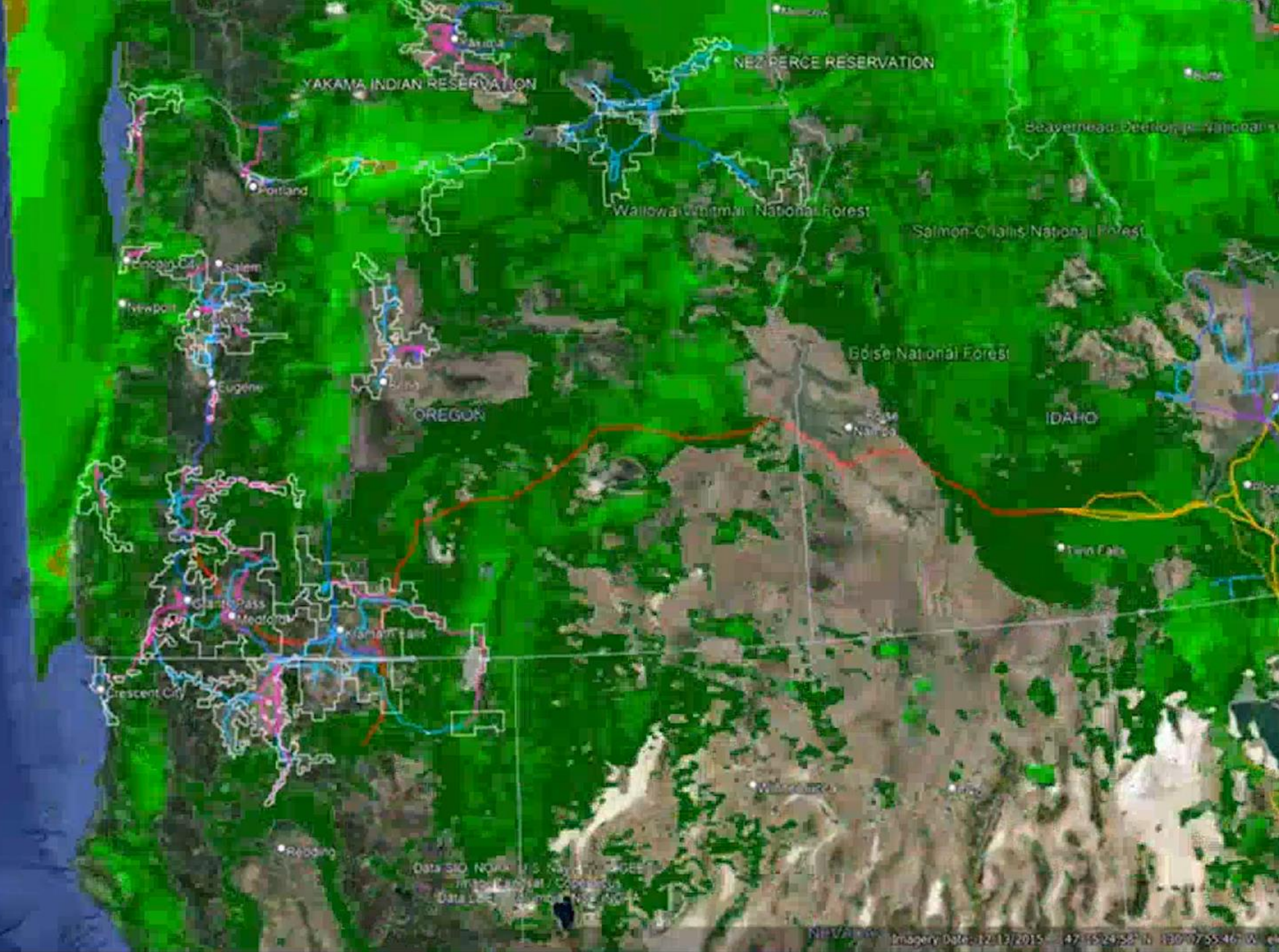
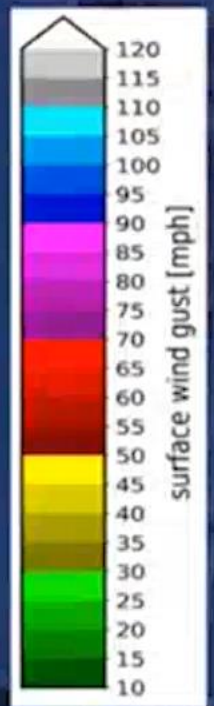
- Quail Prairie Lookout 20 mph
- Long Prairie 20 mph
- Red Mound 16 mph
- Powers 15 mph
- US101 SB at Bullards Bridge 15 mph

TOP NOTEWORTHY GUSTS

- Quail Prairie Lookout 20 mph
- Long Prairie 20 mph
- US101 NB at Brookings MP357.7 10 mph
- Powers 15 mph
- OR42 at OR542 MP23.5 14 mph

Short Term Risk Modeling





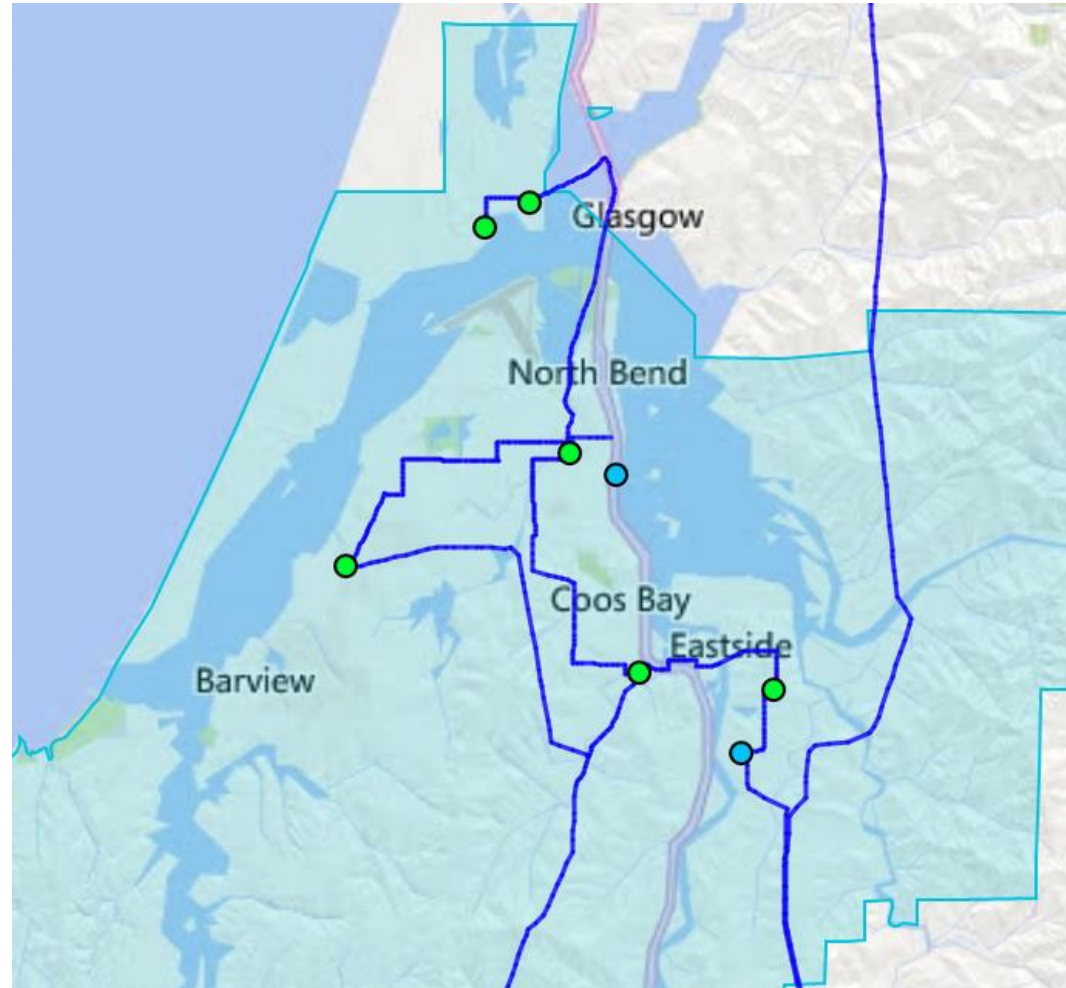
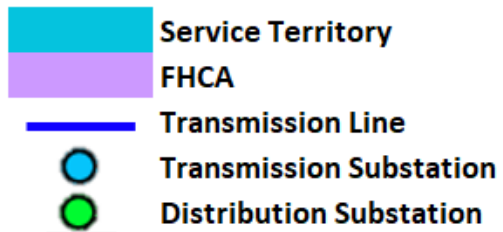


Reducing Wildfire Risk

Fire High Consequence Areas

Coos Bay

- 48 miles of Distribution Lines
- 37 miles of Transmission Lines
- 8 substations



System Hardening

Covered conductors

Power lines are protected by a thick, rigid cover to reduce likelihood of sparks.



Aerial spacers

Suspended from a non-energized cable, spacers protect covered conductors from falling limbs and other hazards.

Fire-resistant poles

Power poles are designed for resilience in extreme conditions.

Undergrounding

Selective undergrounding (where applicable) protects power lines from inclement weather.



System Hardening



Operational Practices



Vegetation Management

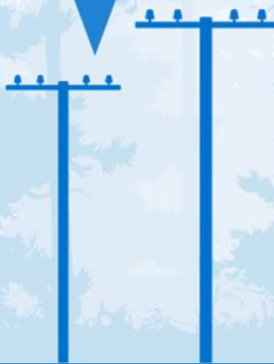
Air and ground surveillance

Aerial and ground patrols monitor conditions to identify potential hazards.



Vegetation clearance and tree pruning

Crews conduct ongoing vegetation clearance to ensure safety buffers around infrastructure.



Tree removal

Identifying and removing potentially hazardous, dead or dying trees.



Asset Management



Enhanced Safety Settings

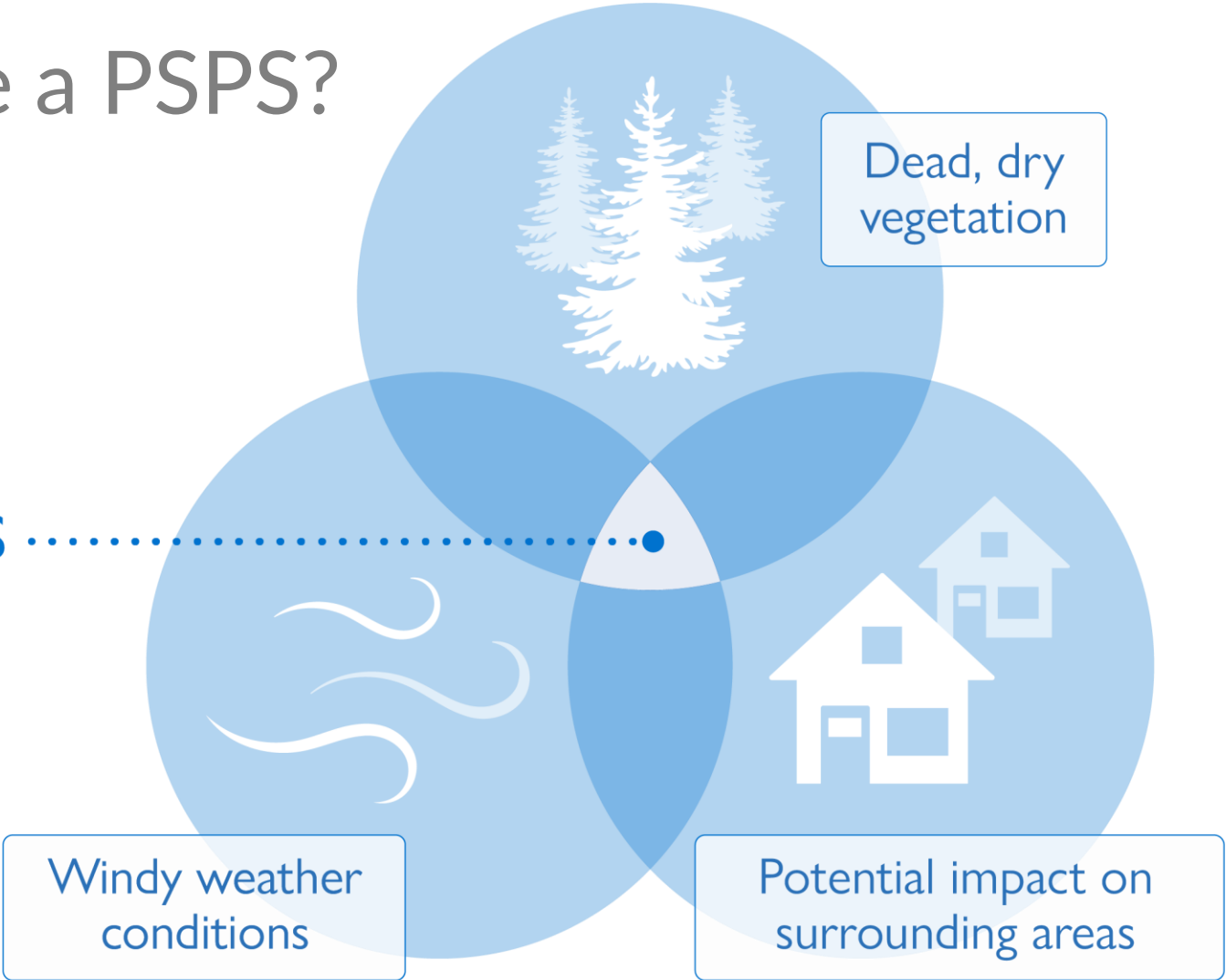




What You Can Do

When do we use a PSPS?

PSPS CONDITIONS



PSPS Timeline



Medical Certificate



PacificPower.net/Medical



PacificPower.net/BackupPower



Have a Plan



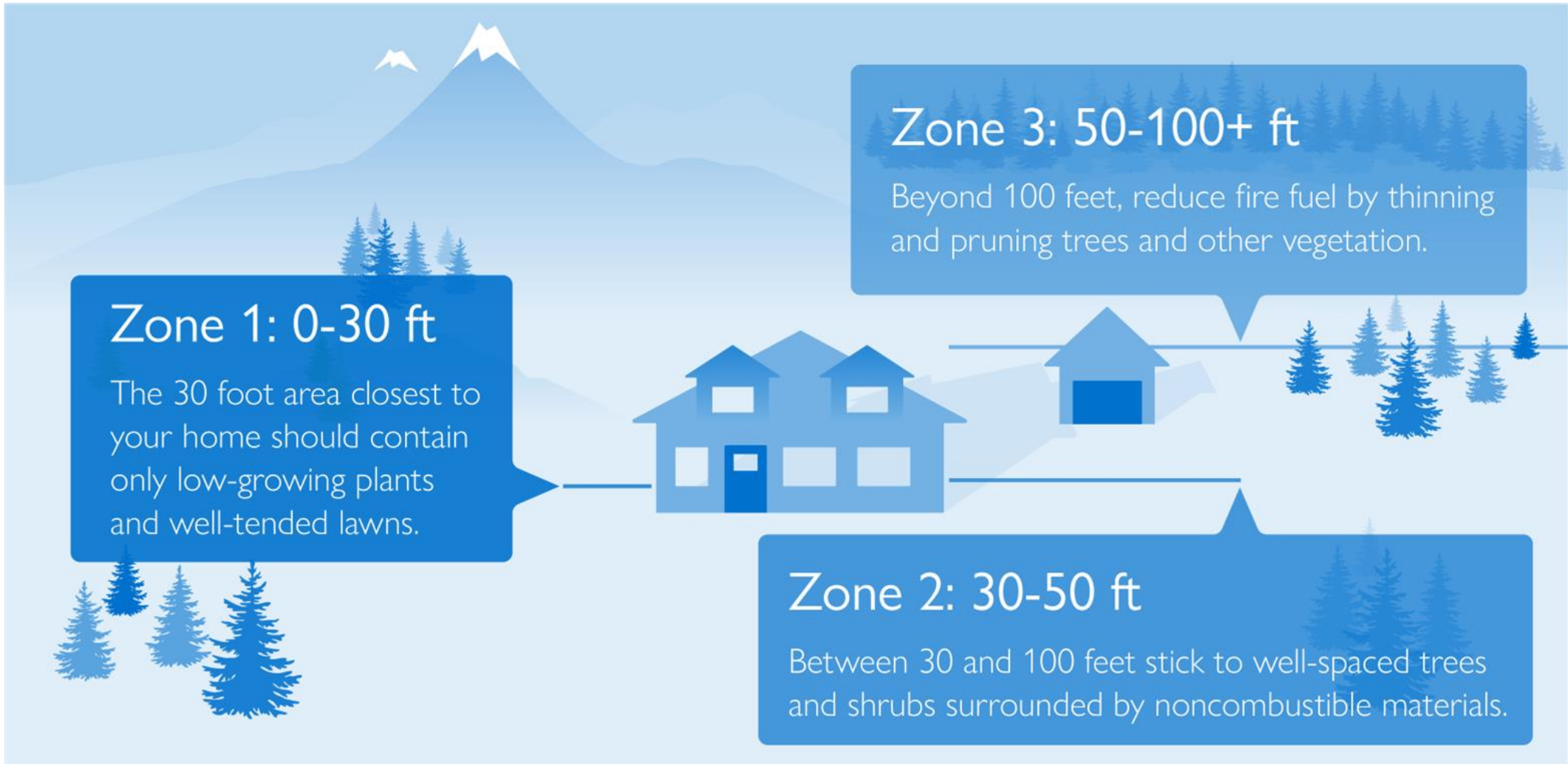
- Hard copy of contact information
- Know about the hazards in your area
- Emergency meeting place
- Insurance and medical information
- Emergency contacts

Make a Kit



- ❑ 2–3 week supply of food and water
- ❑ First aid kit
- ❑ Backup medications
- ❑ Kids – toys, comfort items
- ❑ Pets – pet food, leash or kennel
- ❑ Vulnerable loved ones – assistive devices, walking or sensory tools

Create Defensible Space



Report Outages | [1-877-508-5088](tel:1-877-508-5088)



Working Together

✓ Call us or go online to verify your info:

- 1-888-221-7070
- PacificPower.net/Account

✓ Make sure we have vulnerable family/friends/neighbors info

✓ Apply for a backup power rebate



Questions?

Read our wildfire mitigation plans:

[pacificorp.com/community/safety/
wildfire-mitigation-plans.html](https://www.pacificorp.com/community/safety/wildfire-mitigation-plans.html)



THANK YOU

