

## Anne Cook

---

**From:** Lon Matheny <lonmatheny@coquilletribe.org>  
**Sent:** Friday, May 19, 2023 7:57 AM  
**To:** Anne Cook  
**Cc:** Fauna Hill; Mark Johnston; Eric Scott; Lyman Meade; Matt Jensen; Emerald Brunett  
**Subject:** Kilkich Water Pressure Project

Good morning,

Based on reports of low water pressure at residences on upper Kilkich loop, I previously contacted CBNBWB (WB) who provided me with water pressures of various addresses around the residential loop. Last week, I tested the following addresses with a gauge connected to the hose-bib.

1023 Plank House Loop, 45 psi

1060 Plank House Loop, 45 psi

2668 Mexeye Loop, 55 psi

2637 Mexeye Loop, 70 psi

2610 Mexeye Loop, 85 psi

2602 Mexeye Loop, 80 psi

617 Miluk Drive, 70 psi

This testing was done between 1:40 and 2:15 on 5/12.

All of these pressures fall in line with the pressures provided by the WB.

My understanding is the WB shoots for 35 psi to 55 psi with a minimum requirement of 22 psi. I have been told that residences on upper Grinnell have 28 psi.

Kilkich water is fed by a single 12" main with a single 8" loop providing water from two directions. Should there be a failure to the 8" loop, water could still be supplied via the upstream or downstream 8" supply. Total water loss would come from a failure in the 12" supply below the CEL's building or anywhere upstream from the supply from the WB. Below are questions to the WB that I am waiting on a response.

Good Morning Matt,

We are working on our tribal master plan that includes additional housing and employment facilities on the north and south parcels of the Empire property.

The Northern Parcel has a projected minimum residential density of approximately 715 and a maximum density of approximately 3000.

The Southern Parcel has a projected minimum density of 195 w/ a maximum of approximately 800.

Include an approximate 300 employee density.

Are the existing lines to both parcels ample enough to supply water? Would there be a need for utility upgrades or additions? Estimated costs to us associated, including permits and applicable fees?

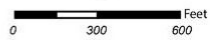
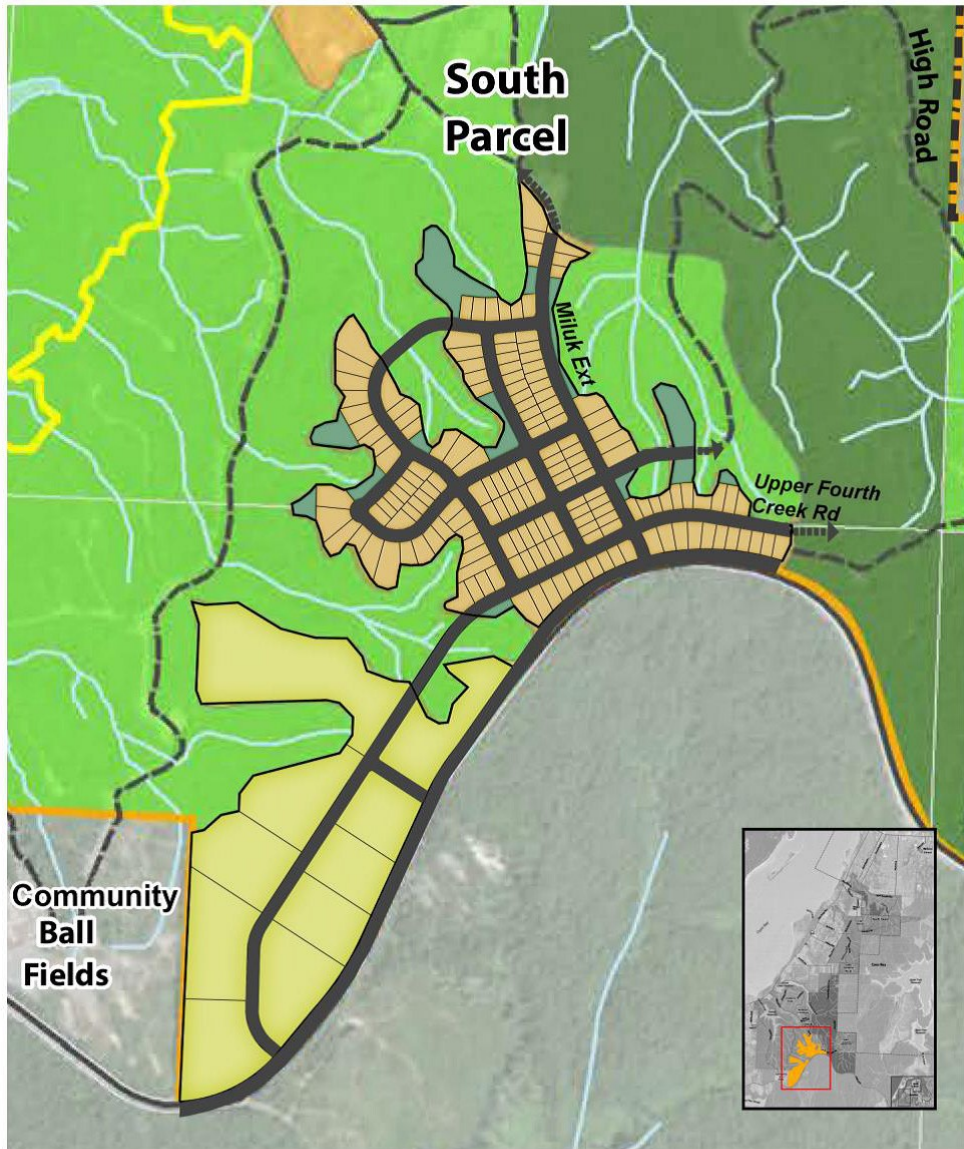
Any inter-governmental agreements required?

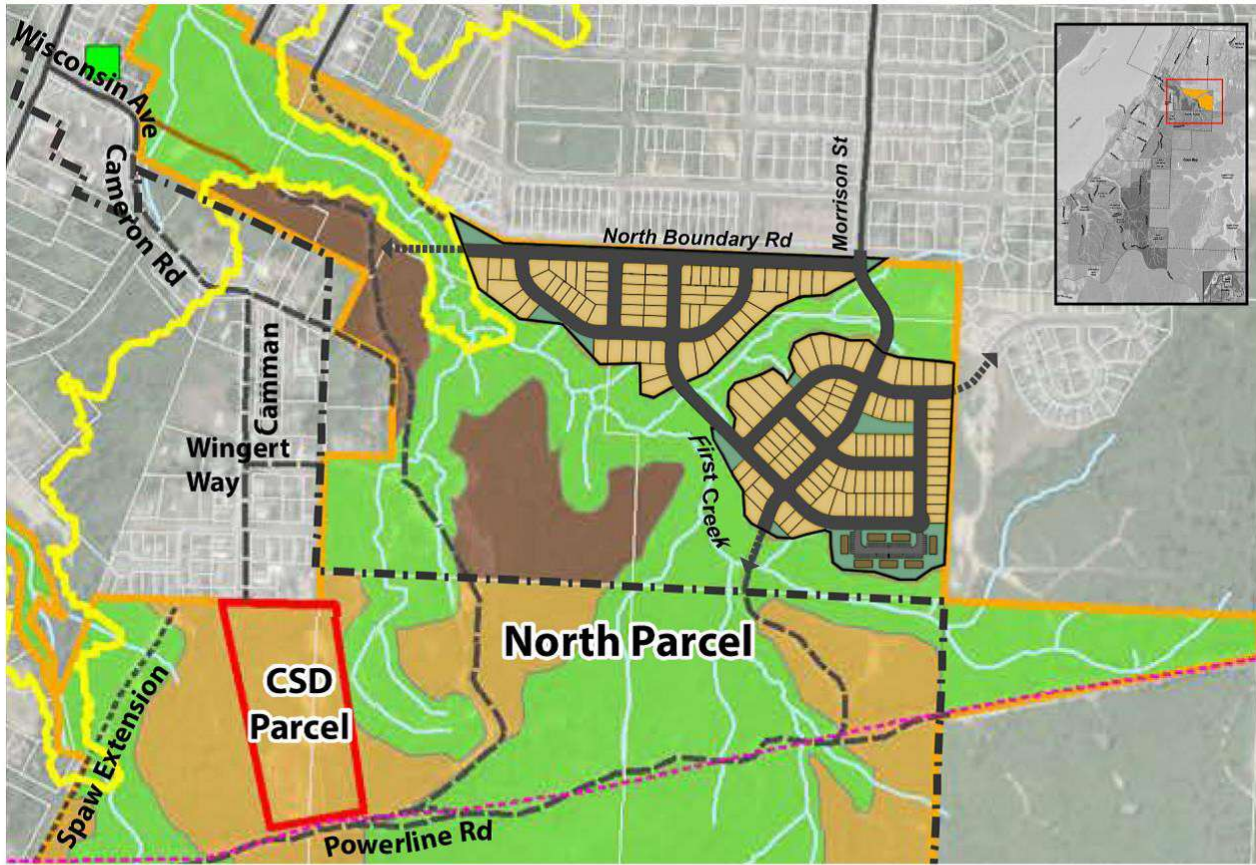
Where ideally would extensions and inter-ties come from to service these areas?

I am sure that we will both have questions regarding this. Please feel free to reach out with any questions.

Thank you again for your assistance.

Lon Matheny





I will keep you apprised of his response.  
Please let me know if you have any questions of if I can assist you on this project.  
Happy Friday!

Lon Matheny  
Coquille Indian Tribe  
Design and Construction Manager  
541-808-8101