

Merry Christmas

Coquille Indian Housing Authority

Sea~Ha Runner

A fun and informative Newsletter for the Residents of the Kilkich Community



Kilkich Resident Holiday Credits

Approved by the CIHA Board of Commissioners, each household on Coquille Tribal Lands will receive a holiday payment credit on their December 2016 billing statement. The payment credit ranges from \$25 to \$150.

Payment credits are awarded based on how well each household complied with their housing agreement during the current year.

The compliance categories are:

- ◆ Payments (made on time and in full each month)
- ◆ Inspections (no home damage beyond normal wear and tear; no housekeeping issues)
- ◆ Update Information (provided timely, voluntarily, or upon request)
- ◆ Neighbor Complaints (no actionable complaints on file)



December 2016
Volume 19,
Issue 12



Housing Payment Pick Up Available

Housing payment pick up is available for elders and people with a disability.

Call the CIHA office to schedule, 541-888-6501.

2016 KRA Holiday Décor Gift Card

The Kilkich Residents Association (KRA) is sponsoring a **Holiday Gift Card Drawing** again this year. Three winners will be drawn and each winner will receive a \$25 gift card.

To be entered in the drawing, a home must have outside Christmas decorations that can be seen from the road directly outside the home. The décor may be lights, trees, wreaths, holiday scenes, yard ornaments, etc. **ONLY outside decorations will be judged.**

The judges will drive through the Kilkich community on the evening of December 18th and note all homes with Christmas décor displayed. The winners will be drawn and awarded their gift cards the week of December 18th.

If you have any questions, please contact KRA Chair Duke Summers at 541-217-8002.

Join in the holiday spirit this season and be entered to win a \$25 gift card.



CIHA Board Meeting at 3:30 p.m.	15
CIHA closes at 3:00 p.m.	16
Winter Solstice Nee-Dash Celebration	21
CIHA closed for the Christmas holiday	23
CIHA closed for the Christmas holiday	26
CIHA closed for the New Year's holiday	30





Coquille

TRIBAL POLICE



Winter Solstice Nee - Dash Celebration celebrated in Traditional Style Dance Wednesday, December 21

Please join us at the CIT Community Plankhouse for the Winter Solstice, Nee - Dash Celebration.

Nee - Dash will be celebrated in Traditional Style Dance. All Kilkich residents are invited and encouraged to attend. The celebration is a potluck, so please bring a salad or dessert to share.

The Nee - Dash celebration begins at dusk.

If you have any questions, please contact Brenda Meade at 541-756-0904.

Did you know that if you will be going out of town for a few days, that you can notify the Tribal Police and let them know you are planning to be gone? They will keep an eye on your unit while you are away.

Call the Tribal Police office, 541-888-0189, to leave your name, telephone number, date of departure, and expected date of return. Please inform them about anyone that may be coming and going from your unit while you are away.

As a preventative family and home safety measure, it is a good practice to keep doors and windows locked at all times. Kilkich is a safe community, but non-resident foot and vehicle traffic do frequent the Kilkich community.



Puppies, Kittens, and Policy It can be tempting to bring home an adorable kitten or puppy to surprise your child or family this Christmas, but please remember that **pets are NOT allowed on Tribal Lands in rental units**. If you have a prescription for a companion animal, the animal **MUST** be spayed or neutered and up-to-date on all vaccinations. **Vaccination records and proof of the spay or neuter must be submitted to CIHA. Companion animals must be approved by CIHA BEFORE they are added to the household.** S/Nipped in Empire, 541-808-2377, offers low-cost spay and neuter services and vaccinations.



**Have you applied?
Are you eligible?**
Log on to
[www.orcca.us/
energy-
weatherization](http://www.orcca.us/energy-weatherization)

to obtain eligibility guidelines and a LIHEAP application or visit the Oregon Coast Community Action office at 1855 Thomas Avenue, Coos Bay, or call 541-435-7080.

The Kilkich Residents Association (KRA) will not hold a December meeting. KRA's next meeting is scheduled for Monday, January 9, 2017 at 6:00 p.m.

If you have a question or comment for KRA before the next scheduled meeting, please email KRA at kilkichresidents@gmail.com



Thank you

Submitted by
Kilkich community member
Dasha Beauvais

Thank you to CIHA employees Debbie Dennis, Scott Platter, and Tracey Mueller for co-sponsoring Clay Beauvais and the M&M's team for the Mr. MHS Dodgeball Tournament. Your support not only of our Tribal youth, but our community youth as well, speaks volumes! You are very MUCH APPRECIATED and We want to say THANK YOU for your sponsorship and support!!!

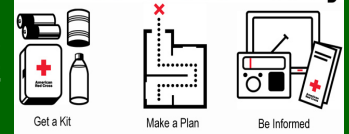
Protect Yourself During Earthquakes!



www.dropcoverholdon.org

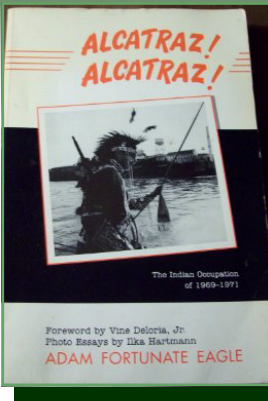
Two earthquakes recently struck off the coast of Coos Bay; a 4.9 magnitude on 11/27/16 and a 4.8 magnitude on 11/28/16. A strong reminder that being prepared isn't a topic to just "talk" about - it is essential, and requires proactive attention today.

Be Red Cross Ready





Historical Native American Occupation of Alcatraz



As any visitor to the Tribe's

Library knows, there is more to the library's collection than the history of the Coquille Indian Tribe (not that there's anything wrong with that). I was reminded of the collection's diversity last month.

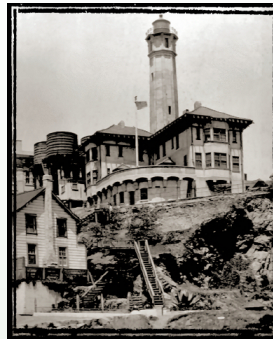
A Tribal member talked to me about the Native American occupation of Alcatraz Island and asked if the library had any information on that important historical event. My answer was "yes".

On November 20, 1969, a group of Native Americans landed on the federally owned Alcatraz Island and claimed it as Indian land. The activists occupied the island for over 18 months while negotiating with federal authorities; their actions were supported by thousands. Decades later, the occupation is considered a driving force for the Native American civil rights movement.

Native peoples staked out claims on the island due to a treaty stating non-reservation Indians

could claim land the federal government had once taken for forts and other uses and had later abandoned. Alcatraz was initially a military base before it became a federally owned prison.

Alcatraz! Alcatraz! by Adam Fortunate Eagle, one of the head organizers,

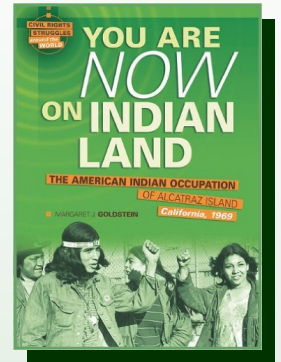


gives a personal account about living on Alcatraz Island for 19 months and discusses some historical background that led to the decision to retake Alcatraz. In that, Eagle talks about the mass-migrations of native people to urban areas like San Francisco in the 50's and 60's, and an earlier occupation of Alcatraz in 1964 after the prison closed.

You Are On Indian Land! Alcatraz Island, 1969-1970

This collection of photographs from the occupation documents how the activists organized and lived on the island and the strength behind their movement. Photos of day to day life on the island show efforts to establish a new community on re-claimed

lands and how this work instilled a sense of pride and cultural renewal for the supporters. Thousands of native people traveled to San Francisco to support the Alcatraz Island occupation. Across the western hemisphere, native communities were inspired to organize and demand recognition and adherence to their sovereign treaty and human rights.



The occupation ended on June 11, 1971. By 1974, the Nixon Administration had repealed the federal Termination Policy and replaced it with policies supporting Self-Determination amongst the country's sovereign governments.



Submitted by:
Chris Tanner, CIT Librarian
541-756-0904, ext. 1218
christanner@coquilletribe.org

Coquille Indian Housing Authority

2678 Mexeye Loop
Coos Bay, OR 97420

(P) 541-888-6501

(P) 800-988-6501

(F) 541-888-8266

daleherring@coquilleiha.org
traceymueller@coquilleiha.org

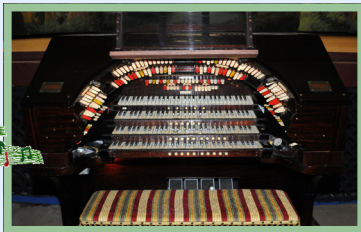


Merry
Christmas!



42nd Annual Christmas Concert at the Egyptian Theatre

Featuring Lee Littlefield
on the Mighty Wurlitzer



and Wilbur Jensen and the
Christmas Brass Band.

Admission is FREE.

Doors open at 11:00 a.m.

Seating is on a first-come,
first-served basis.

Concert begins at 12:00 p.m.

For more information,
call 541-269-8650.



Shore Acres Holiday Lights
display will be open nightly
through New Year's Eve
from 4:00 p.m. to 9:30 p.m.
Admission is \$5 per carload.
For more information,
call 541-888-3732.

Miniature Village and Charleston Train Display



Nov. 28 - Dec. 24

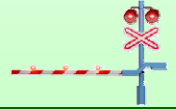
The Charleston Annual Christmas Miniature Village and Train Display will open on Monday, November 28th at 6:00 p.m. in the Old Charleston School House at 64065 Seven Devils Road.

The Train Display is open every night until 10:00 p.m. through Saturday, December 24th. If the building appears dark - don't leave. The lights are kept off to better illuminate all the miniature villages and train displays.

Come out and enjoy the festive Christmas display!

For more information, call 541-888-3268 or 1-800-824-8486.

ALL
ABOARD!



Keep Your Family and Home Safe This Holiday Season

The holiday season is beautiful with all the twinkling lights, wreaths, garland, and decorated Christmas trees. It is important however, to take preventative measures and use caution during this time of year as household fires are more likely to happen during the holidays than at any other time of year.

- Select fresh trees - choose a green tree with a sticky trunk and tight needles. If using an artificial tree, choose one that has been tested and labeled as fire resistant. Artificial trees with built in electrical systems should have the Underwriters Laboratory (UL) label.
- Care for your tree - keep the tree away from heat sources and keep the tree stand filled with water at all times; check the tree stand daily for adequate water. Fresh cut trees will "drink" a lot of water.
- Do not use more than three light sets on any one extension cord. Place extension cords along walls to avoid tripping hazards.
- Do not overload your circuits.
- Turn off all Christmas lights on trees and decorations when leaving the house or going to bed. Unplug extension cords when not in use.
- Use EXTREME caution with candles around pets and children.
- Small children may think some holiday plants look good enough to eat, but many may be poisonous or cause severe stomach upset. Plants to watch out for include,

